

Open For New Horizons.



NINE MONTH RESULTS 2006

for the Flughafen Wien Group

November 2006



At a Glance

- Turnover 1-9/2006: EUR 347.0 mill. + 13.8%
- Operating income 1-9/2006: EUR 355.6 mill. + 10.4%
- EBITDA 1-9/2006: EUR 134.6 mill. + 9.9%
- EBIT 1-9/2006: EUR 87.7 mill. + 6.9%

- Passengers: + 6.4%
(European average: 5.5%*)

- Growth drivers:
 - *Low-cost carriers*
 - *Traffic to Eastern Europe*
 - *Traffic to the Near and Far East*
 - *Cargo*

* Source ACI

Results 1-9/2006

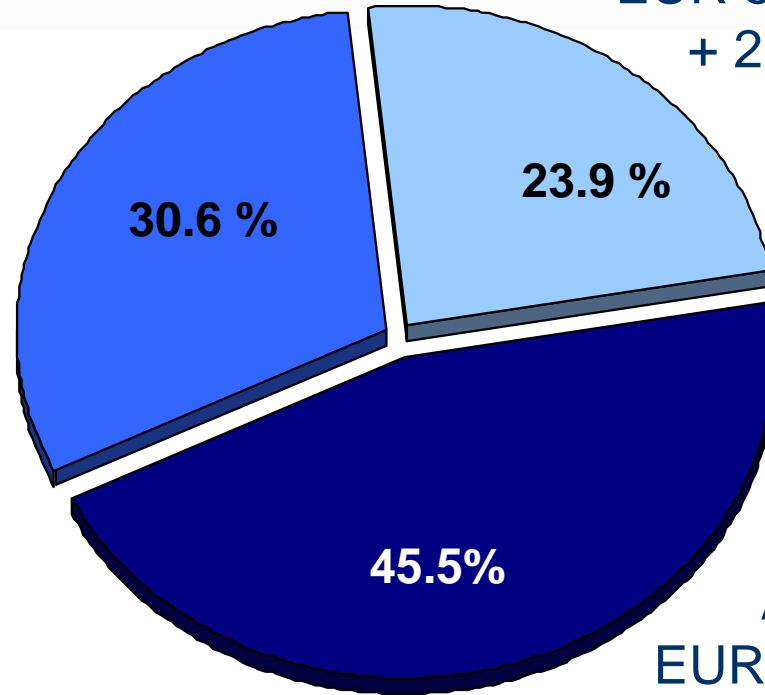
	in EUR mill.	1-9/2006	1-9/2005	Change in %
Turnover		347.0	304.9	+ 13.8
Other operating income		8.6	17.3	- 50.1
Operating income		355.6	322.2	+ 10.4
Operating expenses (excl. depr./amort.)		- 221.0	-199.8	+ 9.7
EBITDA		134.6	122.4	+ 9.9
Depreciation and amortisation		- 46.8	- 40.4	+ 16.1
EBIT		87.7	82.1	+ 6.9
Financial results		- 0.6	7.9	- 106.9
EBT		87.2	90.0	- 3.2
Taxes on income		- 21.2	-23.3	- 8.7
Net profit for the period		66,0	66.8	- 1.2
Thereof due to minority interests		- 0.0	+ 0.4	- 107.5
Thereof due to parent company		66.0	66.4	- 0.7

Results 1-9/2006

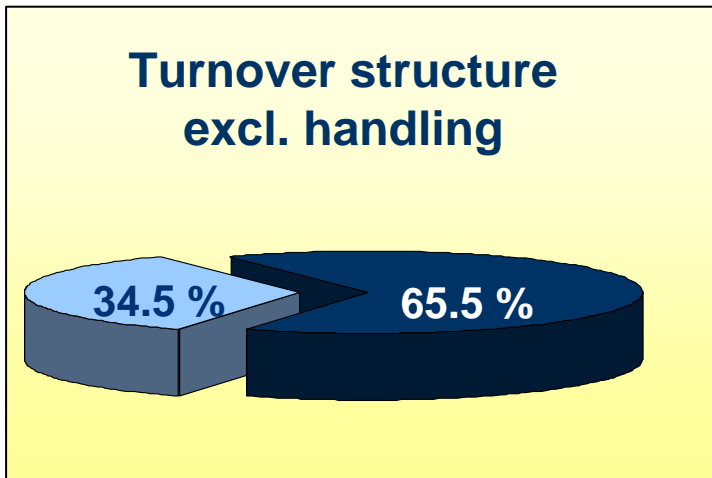
Turnover structure

Handling
 EUR 106.1 mill.
 + 8.9%

Non-Aviation
 EUR 83.9 mill.
 + 27.5%



Airport
 EUR 157.8 mill.
 + 10.9%



Results 1-9/2006

Operating expenses in detail

in EUR mill.	1-9/2006	1-9/2005	Change In %
Cost of materials and services	25.8	24.1	+ 7.2
Personnel expenses	145.9	134.1	+ 8.8
Other operating expenses	49.3	41.5	+ 18.7
Operating expenses	221.0	199,8	+ 9.7

Results 1-9/2006

Operating expenses in detail

- **Cost of materials and services**
 - Long-distance heating, electricity + EUR 1.7 mill.

- **Personnel expenses**
 - Increase in workforce + EUR 5.8 mill.
 - *Group* 282 employees
 - *Thereof VIAS* 231 employees
 - Collective bargaining agreements, overtime etc. + EUR 6.0 mill.
 - + EUR 11.8 mill.**

- **Other operating expenses**
 - Maintenance + EUR 3.1 mill.
 - Leasing AUA base + EUR 4.9 mill.
 - Miscellaneous - EUR 0.2 mill.
 - + EUR 7.8 mill.**

Results 1-9/2006

Financial Indicators

	1-9/2006	1-9/2005
EBITDA margin in %	37.8	38.0
EBIT margin in %	24.7	25.5
Investments in tangible and intangible assets in EUR mill.	125.6	192.3
Traffic units per employee (Flughafen Wien AG excl. VIAS)	4,716	4,490

Traffic 1-9/2006

Passengers:
12,837,409 (+ 6.4 %)

Transfer passengers:
4,325,194 (+ 4.9 %)

Flight movements:
179,289 (+ 2.6 %)

MTOW (in tonnes):
5,113,601 (+ 3.7 %)

Cargo incl. trucking (in tonnes):
195,498 (+ 17.5 %)

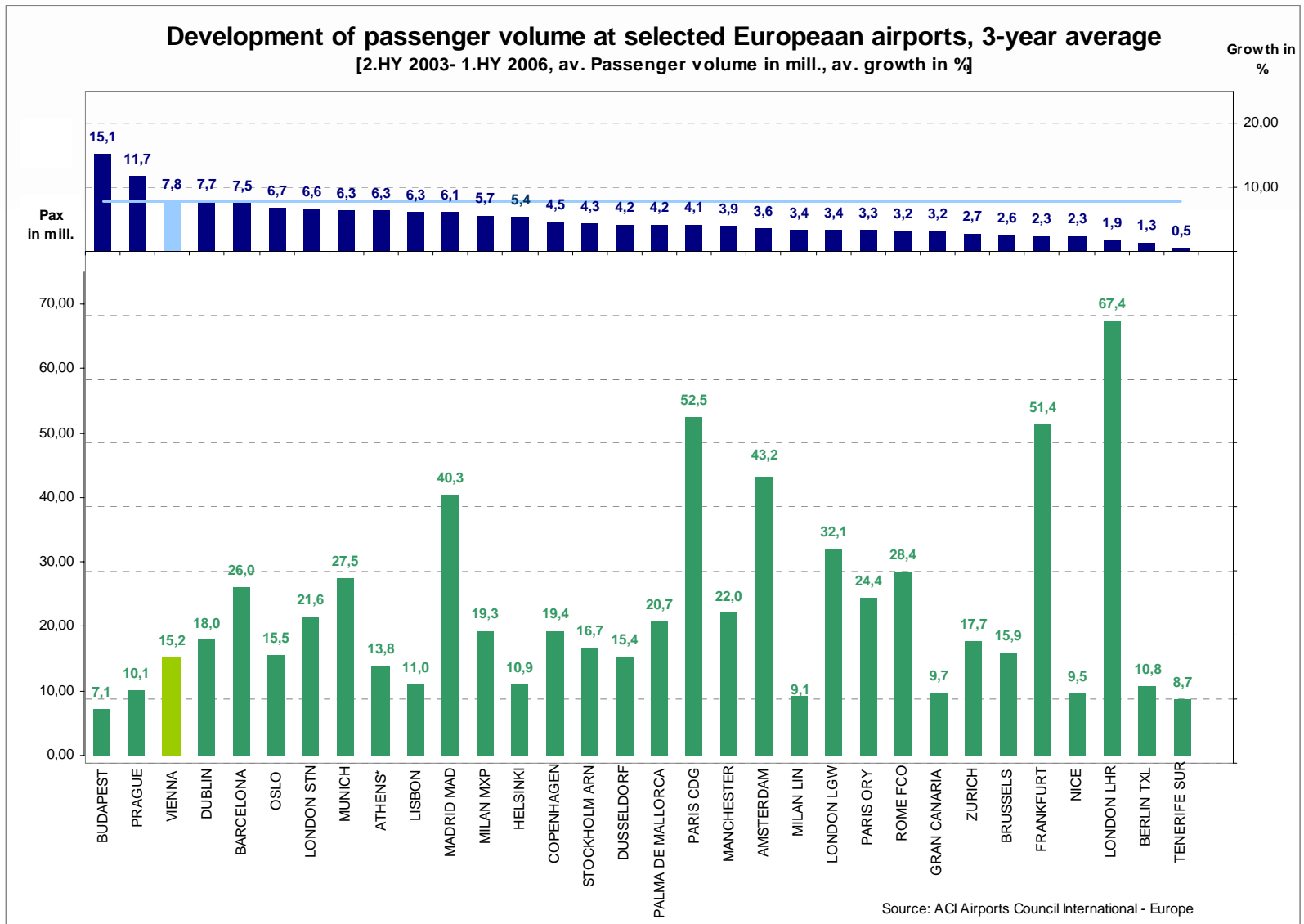


Traffic 1-9/2006

Highlights for the first nine months

- **VIE traffic growth** **+6.4%**
- Strong development in long-haul flights
 - Far East **+6.3%**
 - Near East **+14.4%**
- Flights to Eastern Europe **+ 7.2%**
- Low-cost carriers **+12.3%**
- Cargo (incl. trucking) **+17.5%**

Passenger volume at selected airports



Traffic 1-9/2006

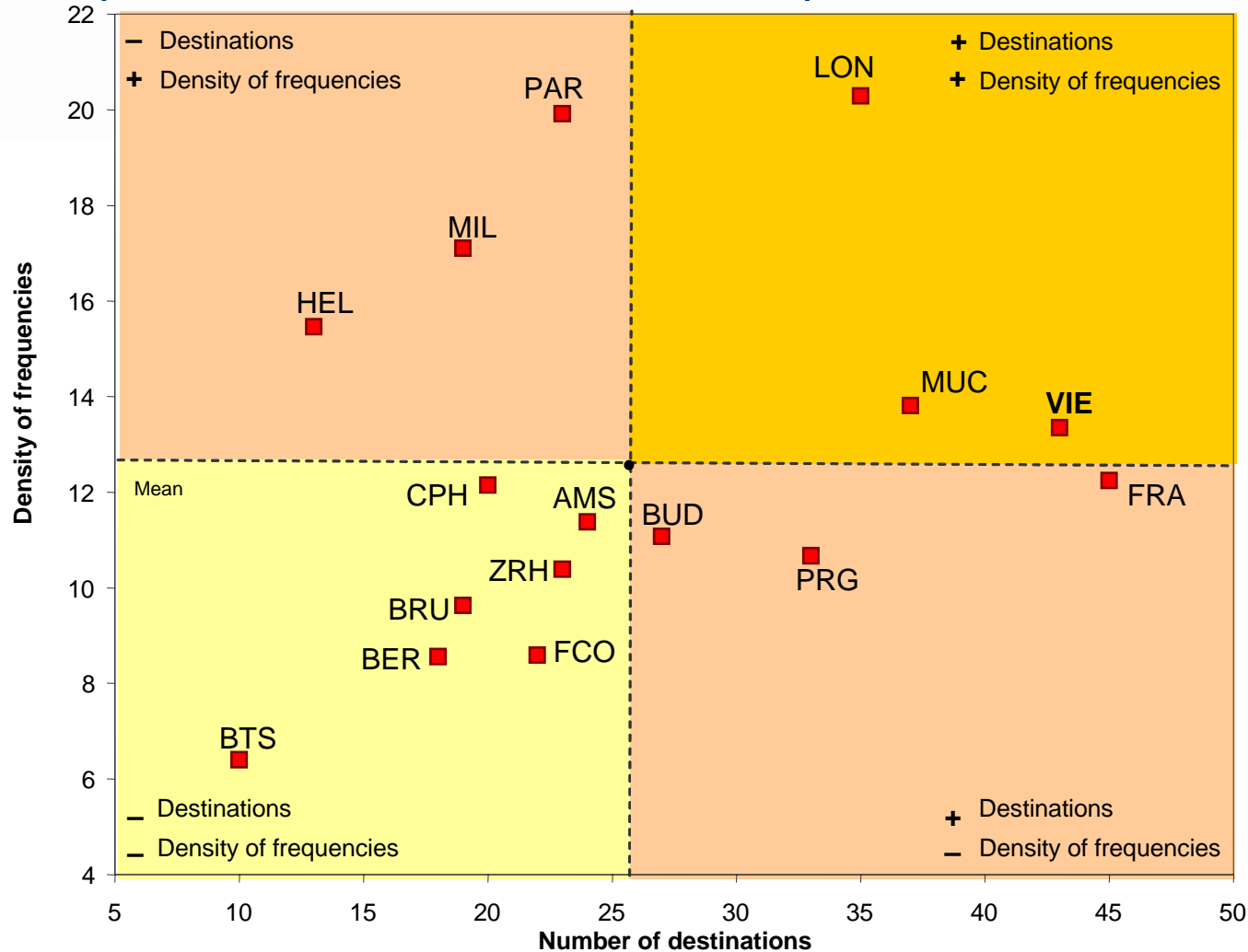
Scheduled flights - passengers

	Share in %	Change in %
Europe	84.0	+ 8.4
East:	16.2	+ 7.2
West:	67.8	+ 8.7
Far East	7.4	+ 6.3
Middle East	4.1	+ 14.4
North America	3.0	- 3.2
Other	1.5	- 6.7
Total	100.0	+ 7.9

Scheduled flights represent 95.8% of total traffic.

Traffic 1-9/2006

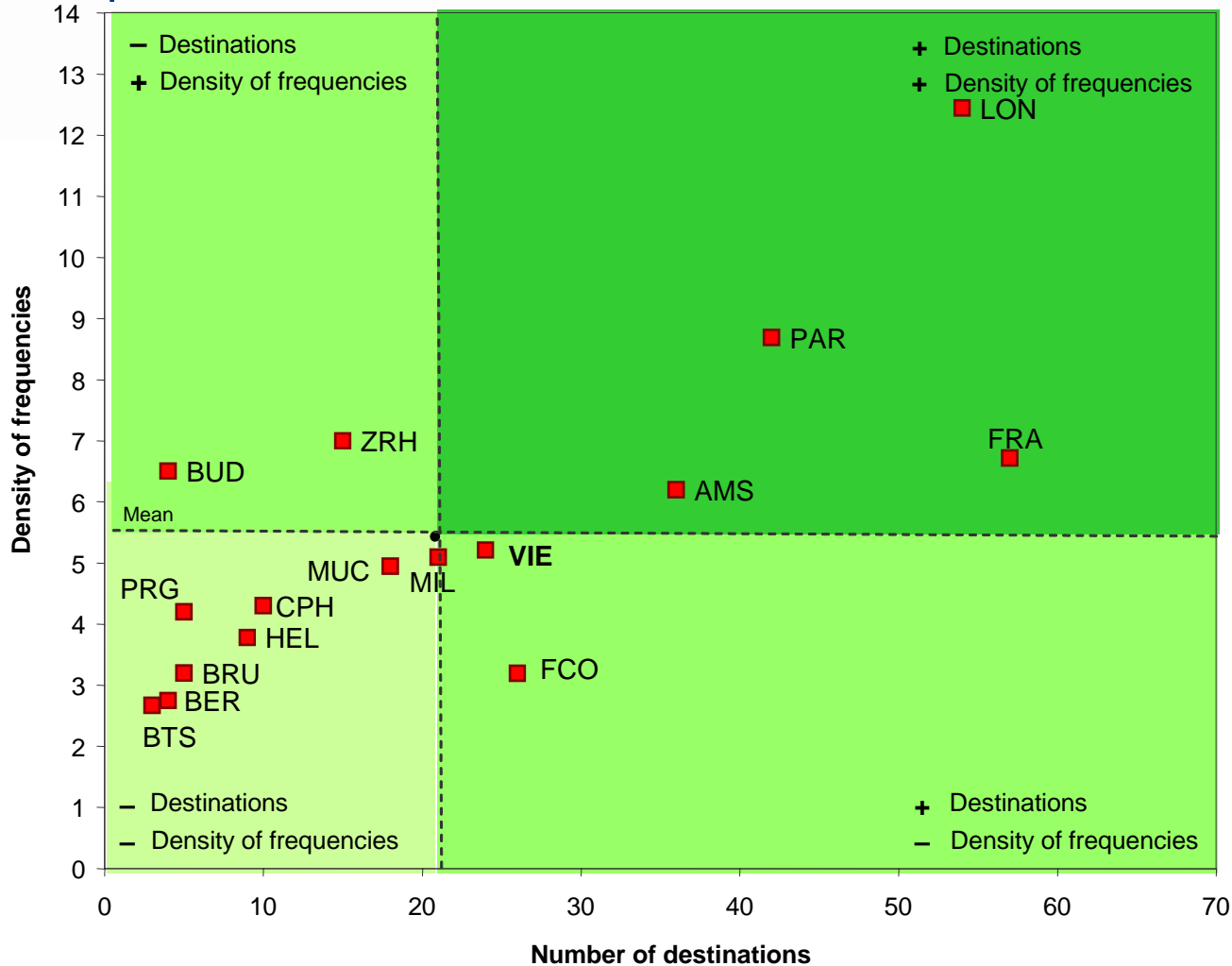
Comparison of traffic to Eastern Europe



* summer 2006

Traffic 1-9/2006

Comparison of Near East and Asia



* summer 2006

Traffic 1-10/2006

	1-9/2006	October 2006	1-10/2006	Forecast 2006
Passengers	12,837,409	1,512,048	14,349,457	
Change in %	+ 6.4	+ 6.7	+ 6.4	6 %
MTOW (in tonnes)	5,113,601	592,162	5,705,763	
Change in %	+ 3.7	+ 4.4	+ 3.8	3 %
Flight movements	179,289	20,811	200,100	
Change in %	+ 2.6	+ 4.2	+ 2.7	2 %
Cargo incl. trucking (tonnes)	195,498	24,307	219,805	
Change in %	+ 17.5	+ 7.4	+ 16.3	

Strategy

- **Utilise opportunities for growth**

- Focus on Eastern Europe

- Transfer hub for Eastern Europe, Near and Far East

- ➔ Tariff measures

- Tariff formulas extended to 2009

- Transfer incentives

- Cargo incentives

- ➔ Capacity measures

- Ground handling

- (secured in part through long-term contracts)

- Continued Minimum Connecting Time of 25 minutes

- VIE-Skylink Terminal

- Development of new markets

- ➔ Slovakia, western Hungary....

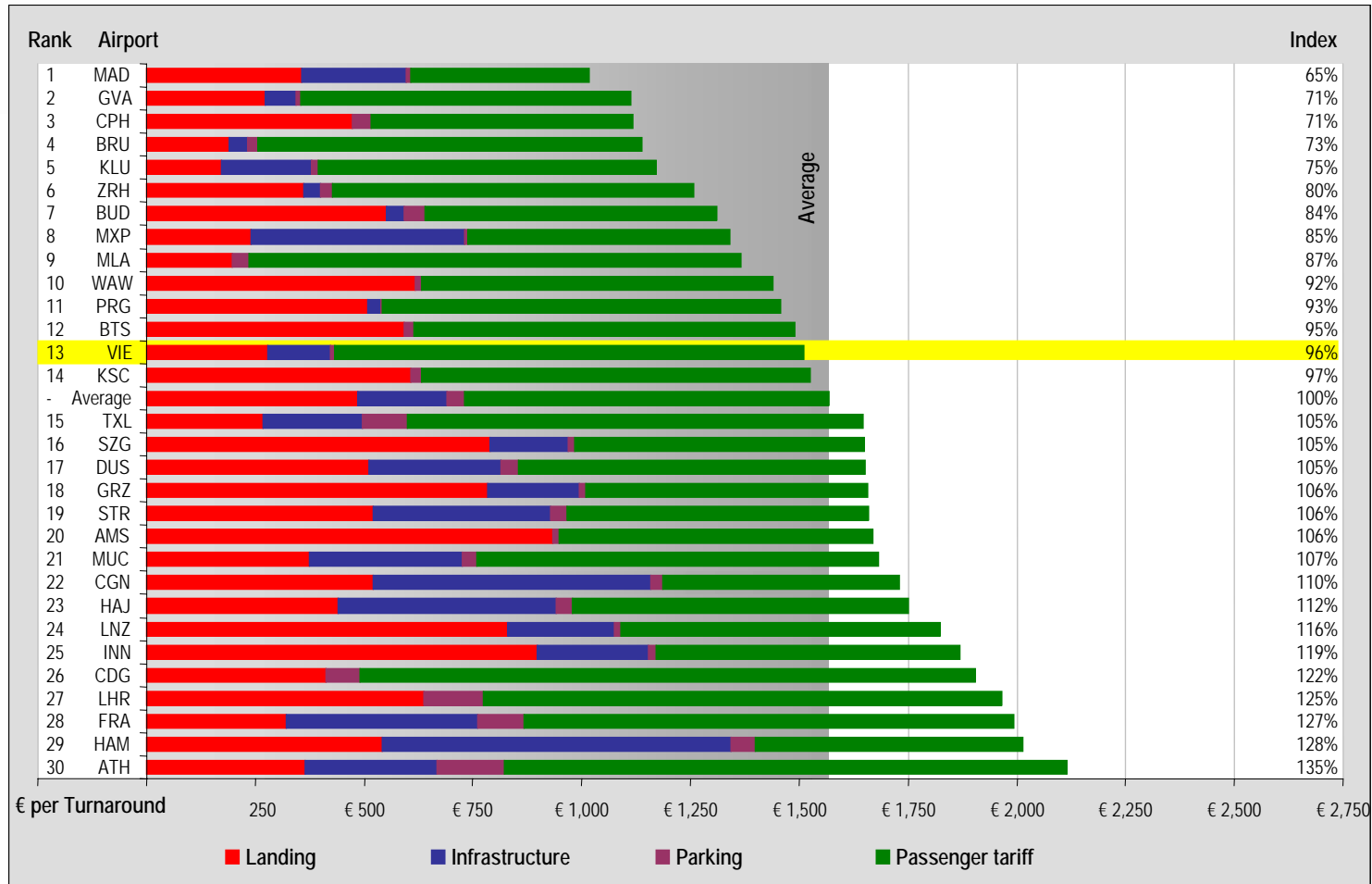
Strategy

- **Increase in non-aviation turnover**
 - **Construction of new lettable objects**
 - Office Park Phase I
 - Air Cargo Center
 - Office Park Phase II
 - Parking areas

 - **Accelerated development of shops and gastronomy facilities**
 - Substantial increase in shopping and gastronomy space in new terminal

Tariffs in Comparison

Vienna International Airport offers its customers tariffs that are 4% below the European average. The index value for the prior year was 99%.



Note: The VIE growth and transfer incentive were deducted from the landing tariff because these measures benefit the airlines.

Capital Expenditure 2006 - 2010

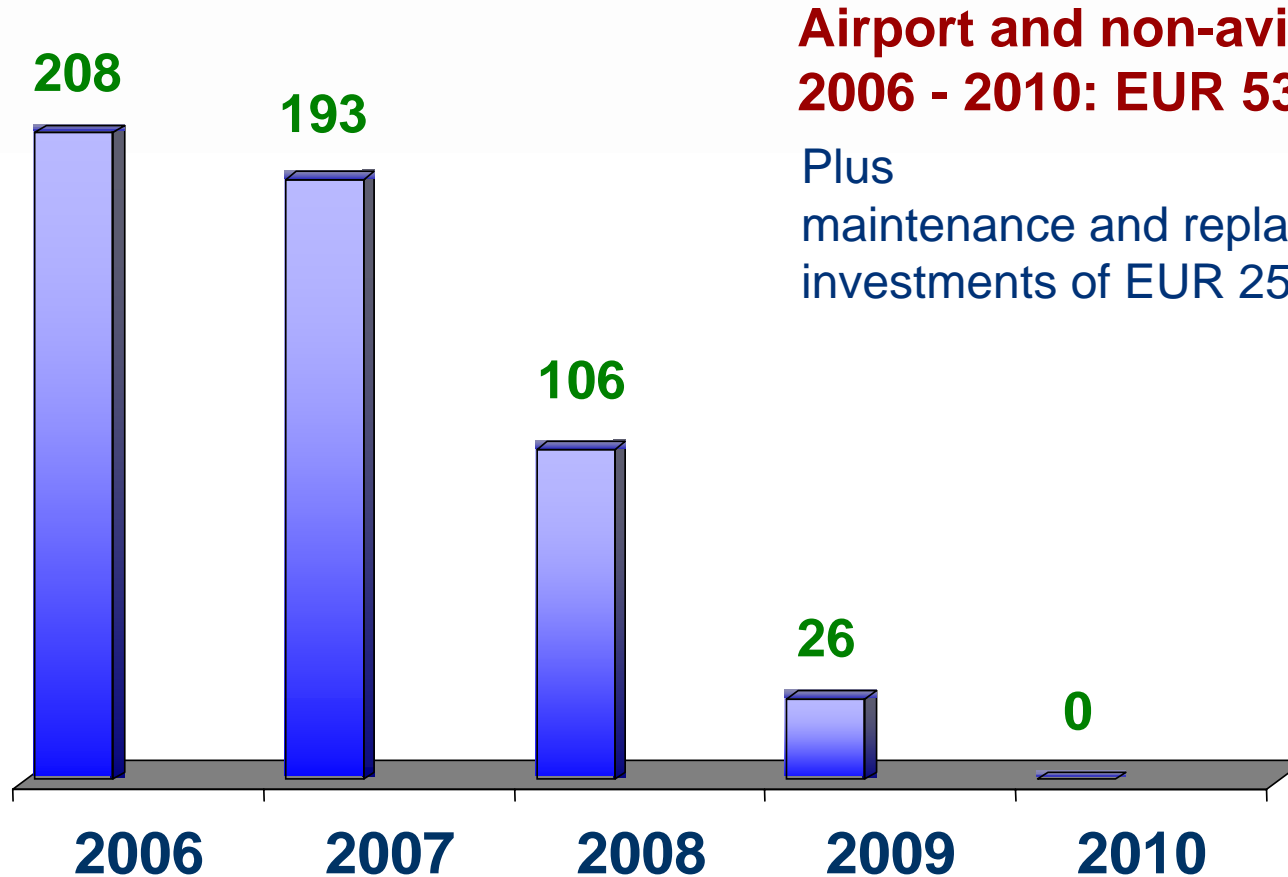
	EUR mill.
Airport	
Skylink	351
Aprons, taxiways	69
Other	36
TOTAL AIRPORT:	456
Non Aviation	
Office Park Phase 2	38
Parking	18
Forwarding agent building	16
Other	5
TOTAL NON-AVIATION	77
TOTAL	533

GOALS

- In budget and on time
- Highest possible return

Capital Expenditure 2006 - 2010

in EUR mill.



**Airport and non-aviation investments
2006 - 2010: EUR 533 mill.**

Plus
maintenance and replacement
investments of EUR 25 – 30 mill./year

Expansion of Skylink Terminal

Expansion of Skylink Terminal
(capacity designed for 24 mill. passengers)



Expansion of Skylink Terminal

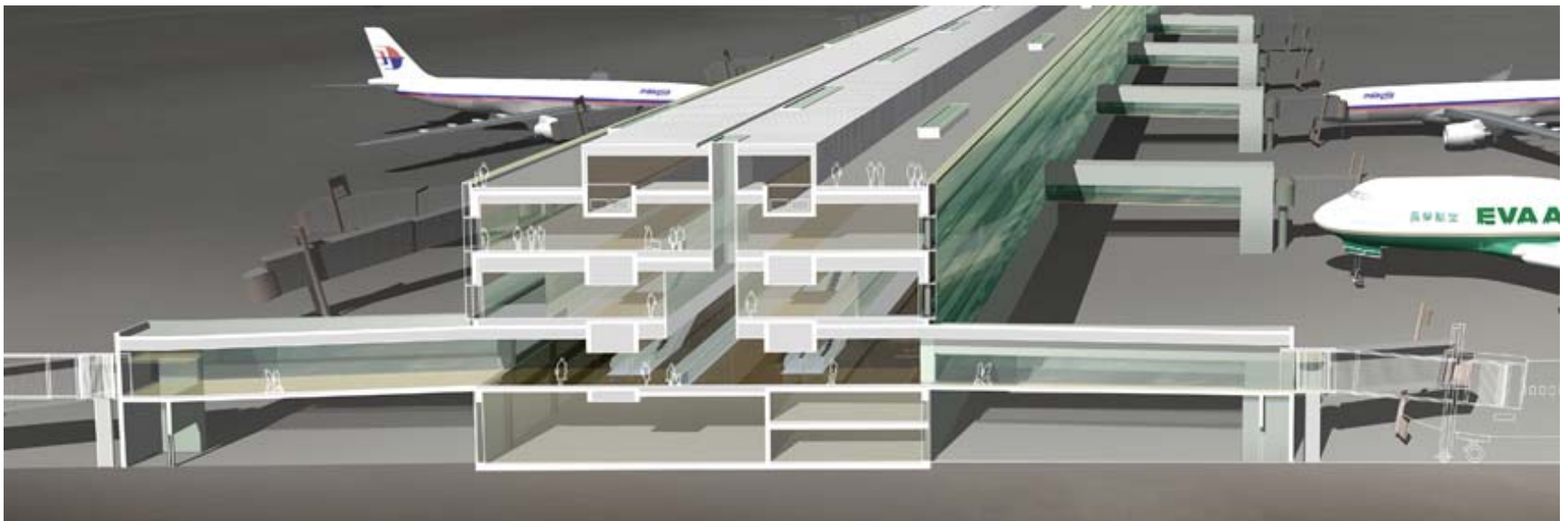
Capacity:

- Check-in counters: 96
- Aircraft parking positions: 17
- Gates: 51
- Baggage carousels: 10

One-roof concept

Passenger flows separated
over various levels

Minimum connecting time:
25 minutes



Expansion of Skylink Terminal

Dimensions:

- **Terminal**
Length: 270m, width: 55m, height: 20m
- **Pier**
Length: 450m, width: 33m, height: 20m

Gross floor space:

- Terminal: 76,000m²
- Pier: 71,000m²
- Corridor network: 3,000m²

Net floor space:

- Shops: 8,000m²
- Gastronomy: 4,700m²



Investment project: Malta

Passengers in 2005

- 2.8 mill.

Owners

- Government of Malta: 20.0%
- Private investors: 29.9%
- VIE through 100% subsidiary 10.1%
- MMLC (thereof VIE: 57%) 40.0%



in EUR mill.	2004/2005
Turnover	38.6
EBIT	13.8
Net profit for the period	7.5
EBITDA margin in %	43.6
EBIT margin in %	35.7



EBIT and share price have doubled since 2002.

International Projects

Key data on the 66% privatisation of Košice

- Acquisition price: SKK 900 mill. (~EUR 24 mill.)
- Capital contribution: SKK 380 mill. (~EUR 10 mill.)
- Investment program: SKK 415.6 mill. (~EUR 11 mill.)
within the first five years

Consortium:

- Flughafen Wien Aktiengesellschaft
- Raiffeisen Zentralbank Österreich AG (RZB)
- Penta Investment Limited

International Projects

Kosice Airport

- Total area: 3.4 km²
- 1 runway:
 - Runway 01/19: 3,100m
- 269,885 passengers in 2005
- + 30% growth in first half of 2006
- Crossroads between 4 countries:
Poland – Ukraine – Hungary - Slovakia
- Gateway to High Tatra tourism region



Further information

Robert Dusek

Investor Relations

Tel: 01/7007-23126

Fax: 01/7007-23058

E-mail: r.dusek@viennaairport.com

VIE in the Internet:

www.viennaairport.com

Flughafen Wien AG

P.O. Box 1

A-1300 Wien-Flughafen